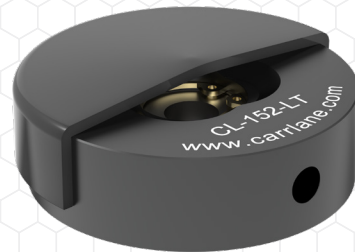
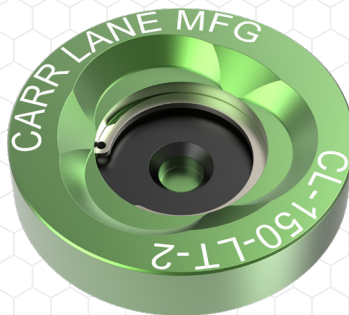
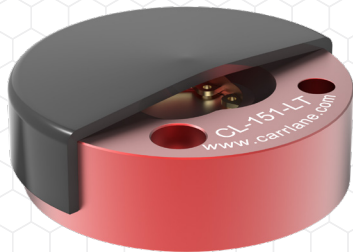







**Keep your target in place.  
Keep it Carr Lane Mfg.!**



Carr Lane Mfg. Laser Target Nests are designed to hold a 1.5" spherical target one inch off your fixture. This precision machined, 6061 nest utilizes a neodymium magnet to hold your target in place. Made in the USA.

Image	Part No.	Finish
 A red laser target nest with a central hole and two side holes. The text "Carr Lane" is at the top, "CL-151-LT" is in the middle, and "www.carrlane.com" is at the bottom.	CL-151-LT	RED ANODIZE
 A green laser target nest with a central hole and two side holes. The text "CARR LANE MFG" is at the top, "CL-150-LT-2" is in the middle, and "2-11-2015" is at the bottom.	CL-150-LT-2	GREEN ANODIZE
 A black laser target nest with a central hole and two side holes. The text "Carr Lane" is at the top, "CL-152-LT" is in the middle, and "www.carrlane.com" is at the bottom.	CL-152-LT	BLACK ANODIZE

[carrlane.com/lasertargetnest](http://carrlane.com/lasertargetnest)