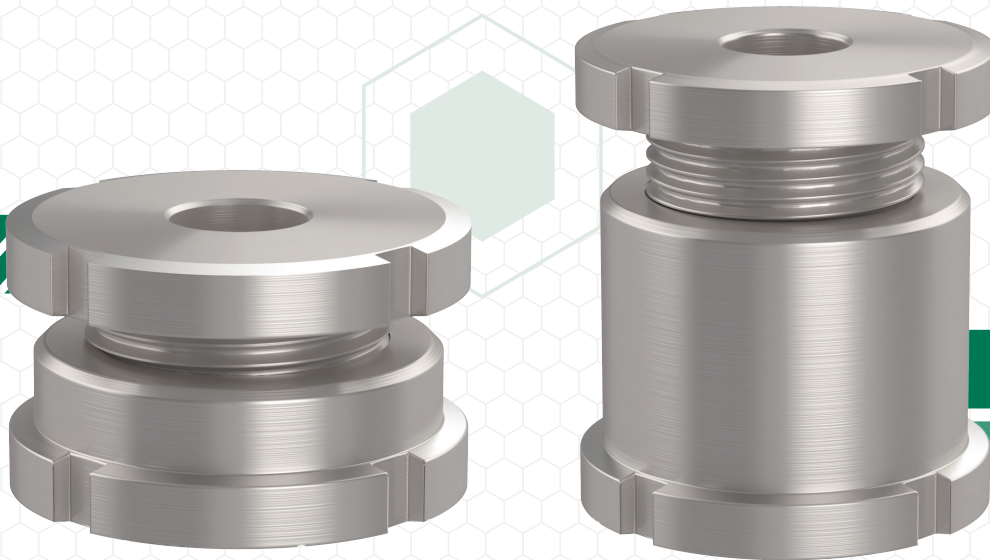


Through-Hole Leveling Jacks

Precision Leveling Through Minimal Modifications



Short Through-Hole Leveling Jacks

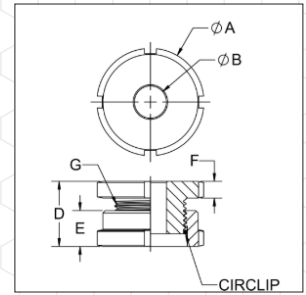
- Low profile
- Higher load capacity
- Smaller height-adjustment range

Tall Through-Hole Leveling Jacks

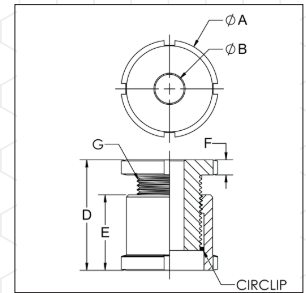
- Added adjustment range
- Additional support height
- Slightly less load capacity

Technical

- Through-Hole Leveling Jacks are designed for precise leveling at a desired clamping point
- Clamping is achieved by tightening a bolt inserted through the workpiece and through the inside diameter of the leveling jack
- Static load from tightening the mounting bolt securely locks the jack's rotation
- Threaded upper sleeve and a tapped lower sleeve, with a fine thread that allows precise setting
- Anti-rotation disk serves as a positive limiter for maximum height
- Spanner wrench can be used for additional leverage
- Available for 3/8", 1/2", and 5/8" bolt sizes (10, 12, and 16 mm in metric).



Short Through-Hole Leveling Jack



Tall Through-Hole Leveling Jack

Short Through-Hole Leveling Jacks

PART NO.	CENTER BOLT SIZE	HEIGHT ADJUSTMENT RANGE	A DIA	B DIA	D MIN	D MAX	E	F	G THREAD	MAXIMUM STATIC LOAD AFTER STANDARD BOLT PRELOAD (lbs.)
CL-310-TLJS	3/8" or M10	0.20	1.26	0.43	0.71	0.91	0.47	0.24	M20x1	8,500
CL-412-TLJS	1/2" or M12	0.27	1.77	0.53	0.87	1.14	0.59	0.28	M30x1.5	18,000
CL-516-TLJS	5/8" or M16	0.35	2.28	0.69	1.10	1.45	0.75	0.35	M40x1.5	30,000

Tall Through-Hole Leveling Jacks

PART NO.	CENTER BOLT SIZE	HEIGHT ADJUSTMENT RANGE	A DIA	B DIA	D MIN	D MAX	E	F	G THREAD	MAXIMUM STATIC LOAD AFTER STANDARD BOLT PRELOAD (lbs.)
CL-310-TLJT	3/8" or M10	0.79	1.26	0.43	1.38	2.17	0.47	0.24	M20x1	5,200
CL-412-TLJT	1/2" or M12	0.98	1.77	0.53	1.65	2.63	0.59	0.28	M30x1.5	12,000
CL-516-TLJT	5/8" or M16	1.26	2.28	0.69	2.13	3.39	0.75	0.35	M40x1.5	20,000